

Pouching System

Components

Presentation Prepared For:
Place Picture of Facility Logo

Presented By: Insert Name



What is the Pouching System?

- Products used to:
 - Collect stoma effluent
 - Provide a secure, predictable seal
 - Protect the peristomal skin

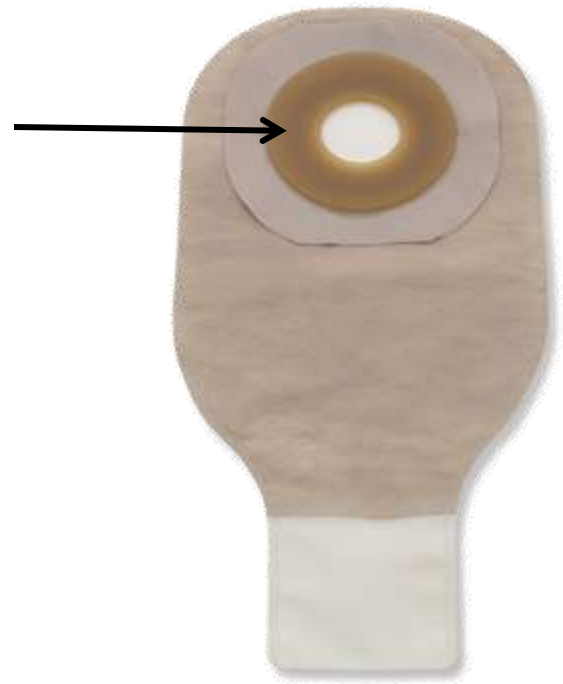


Pouching System Components:

Skin Barrier

Pouching System Components: Skin Barrier

- Provides skin protection
- Adheres pouching system to the skin



Skin Barrier Formulation

Skin Barrier Formulation

Standard Wear

- Good skin protection and adhesive contact with the skin
- Not as resistant to fluid erosion
- Well suited for:
 - Semi-formed to formed discharge (e.g. colostomy)
 - Fragile skin (e.g., frail elderly and pediatrics)
 - Frequent pouch changes (e.g., closed pouches)



Skin Barrier Formulation

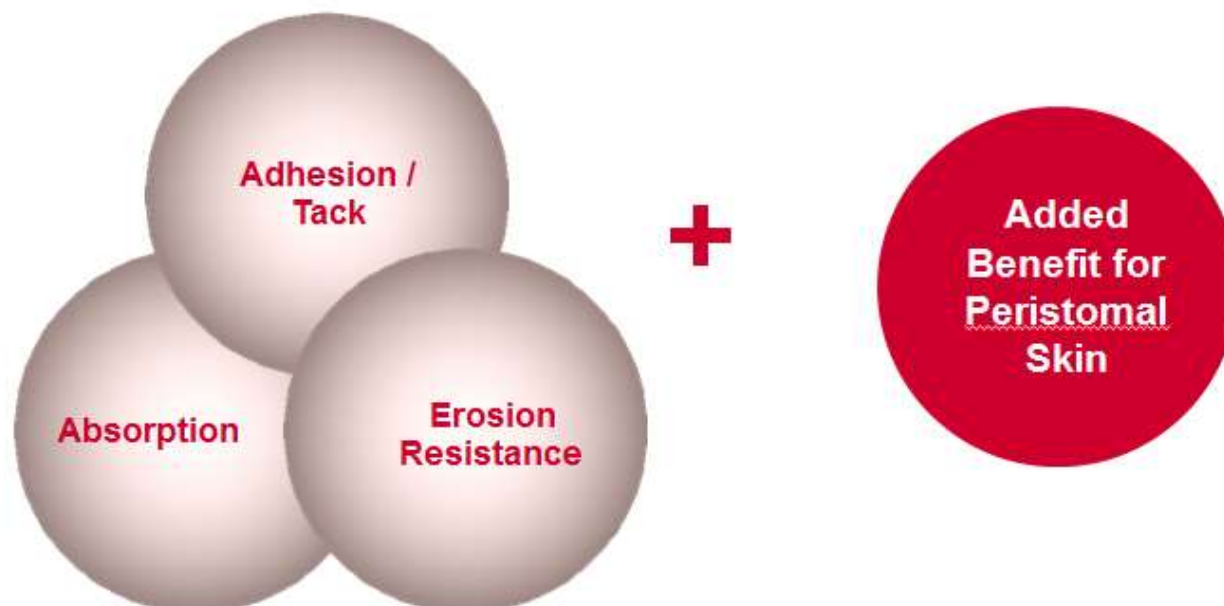
Extended Wear

- More durable and strong adhesive contact
- Provides longer wear time compared to regular wear skin barrier
- Well suited for:
 - Liquid discharge (e.g. ileostomy and urostomy)
 - Less frequent barrier changes



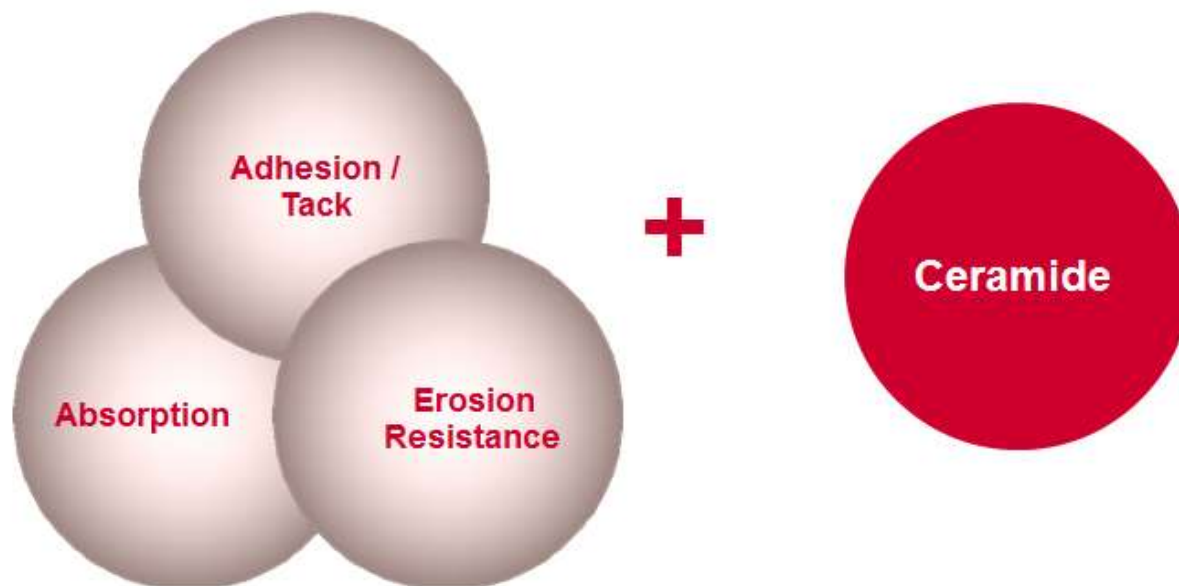
Skin Barrier Formulation

Infused Skin Barrier



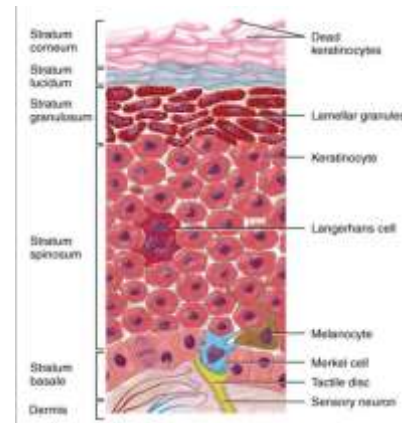
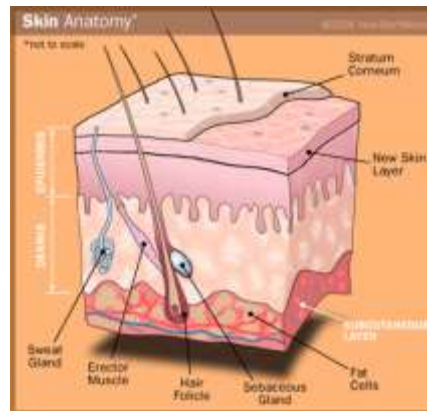
Skin Barrier Formulation

The CeraPlus™ Skin Barrier *with Remois Technology**

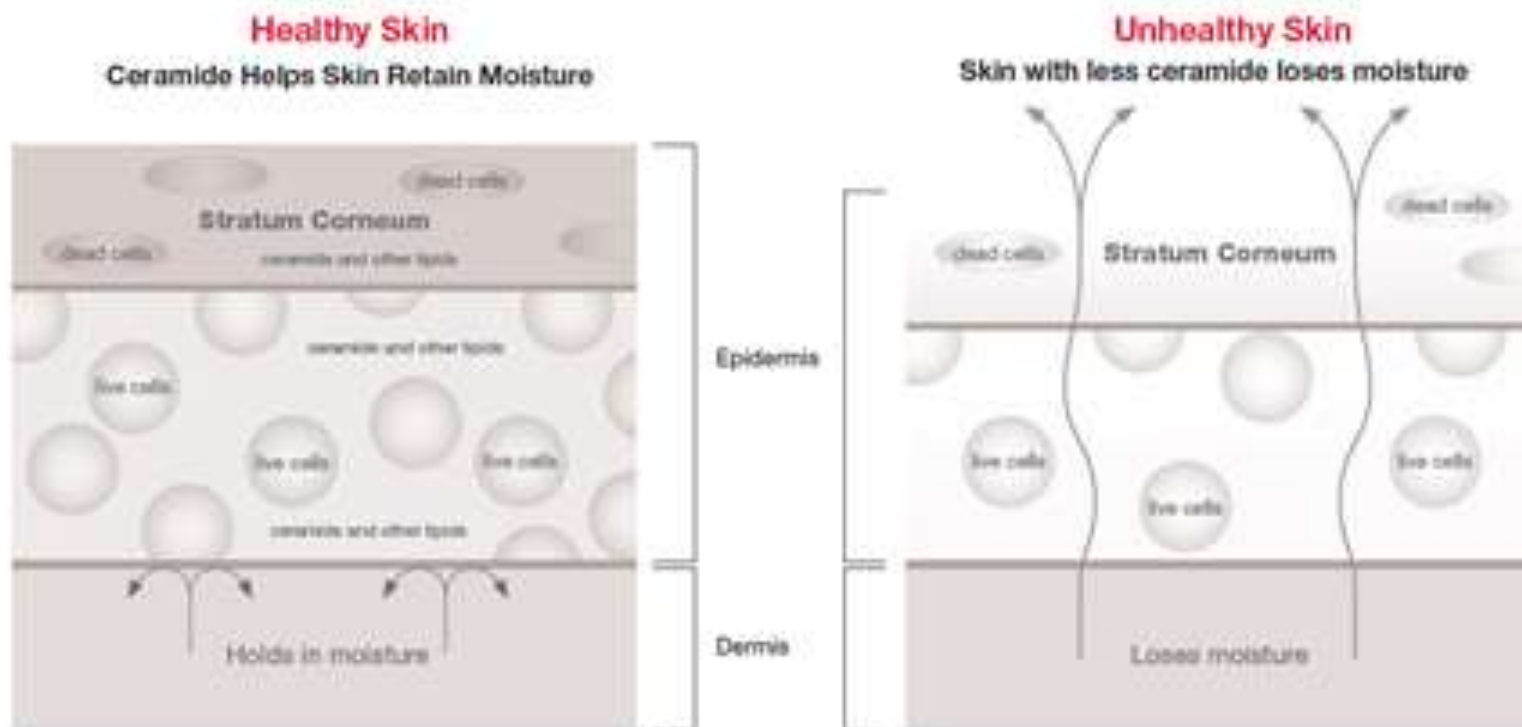


Skin Health and Ceramide

- A natural component of human skin
- Links cells of the outer skin together to form a waterproof, protective barrier



Skin Health and Ceramide



Skin Barrier Options

Skin Barrier Options

- Cut-to-Fit
 - Starter hole
 - Maximum cutting surface
- Pre-Sized
 - Flat up to 44 mm
 - Convex up to 51 mm
- Sizing
 - Use measuring guide to achieve optimum fit



Skin Barrier Options: Cut-to-Fit

- Starter hole to easily insert scissors for cutting
- Ideal for:
 - Stoma still changing in size
 - Irregular shaped stoma
 - Offsetting the stoma opening to avoid other structures (incisions, drains)
- Maximum cutting surface may be printed on release liner
 - Not recommended to cut beyond the designated area



Skin Barrier Options: Pre-Sized

- Opening size has already been cut
- Simplest application
- Ideal for:
 - Stoma size has stabilized
 - Round stomas
 - People with limited dexterity



Skin Barrier Options: Sizing

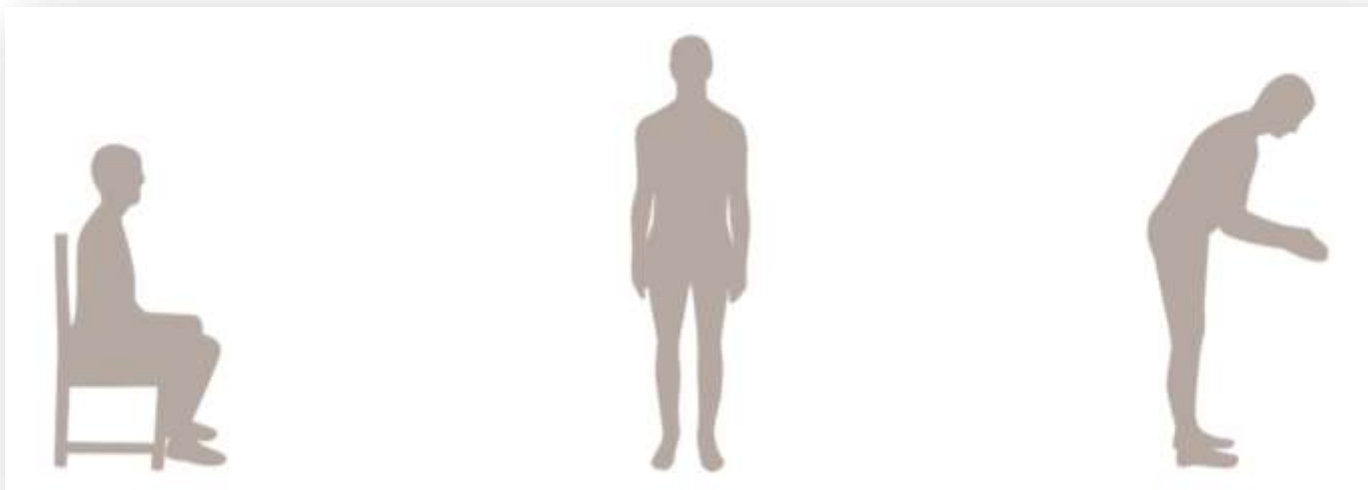
- Use a measuring guide to determine correct size of stoma
- Skin barrier should fit where the skin and stoma meet
- Opening should be the same shape as the stoma



Skin Barrier Construction

Skin Barrier Construction: Flat or Convex

- When choosing a flat or convex skin barrier:
 - Patients should be assessed in a variety of positions with the pouching system removed
 - Abdomen should always be assessed in the sitting position



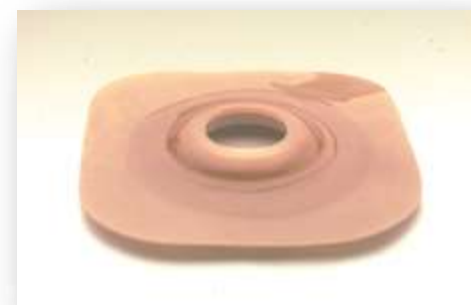
Skin Barrier Construction: Flat

- Level or even adhesive surface
- More flexible
- Lower profile
- Ideal for:
 - Protruding stomas
 - Peristomal areas that are relatively smooth
- May be cut-to-fit or pre-sized



Skin Barrier Construction: Convex

- Curves outward toward the peristomal skin to increase depth of skin barrier
- Firm or soft
- Ideal for:
 - Flush or retracted stomas
 - Peristomal areas with creases or folds
- May be cut-to-fit or pre-sized



Types of Convexity

Types of Convexity

- Firm Convex Skin Barrier
 - Resists deforming with movement or changes in the abdomen
 - Provides consistent pressure or support



Types of Convexity

- Soft Convex Skin Barrier
 - Provides gentle pressure or support
 - Appropriate for a flush stoma and a hard abdomen



Types of Convexity

- Soft Convexity

- Available in one and two-piece pouching systems
- Provides gentle pressure around flush or retracted stomas
- Designed to conform to uneven body contours



Types of Convexity

- Soft Convexity

- Can be created by adding a convex barrier ring to a flat one-piece barrier

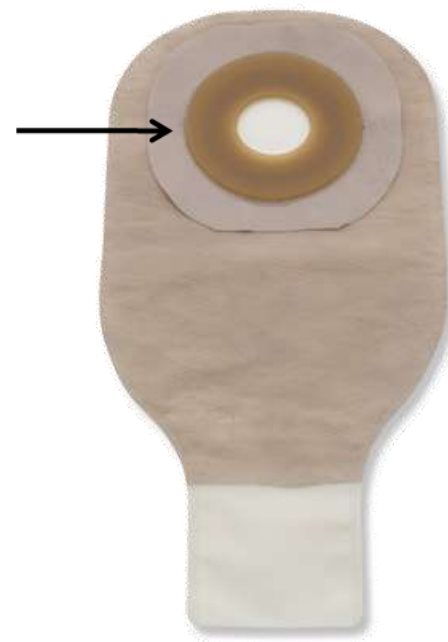


Pouching System Components:

Tape

Pouching System Components: **Tape**

- Serves as a border around the skin barrier
- Creates a smooth profile around edge of the barrier
- Provides an enhanced sense of security
- Flexible
- Low profile

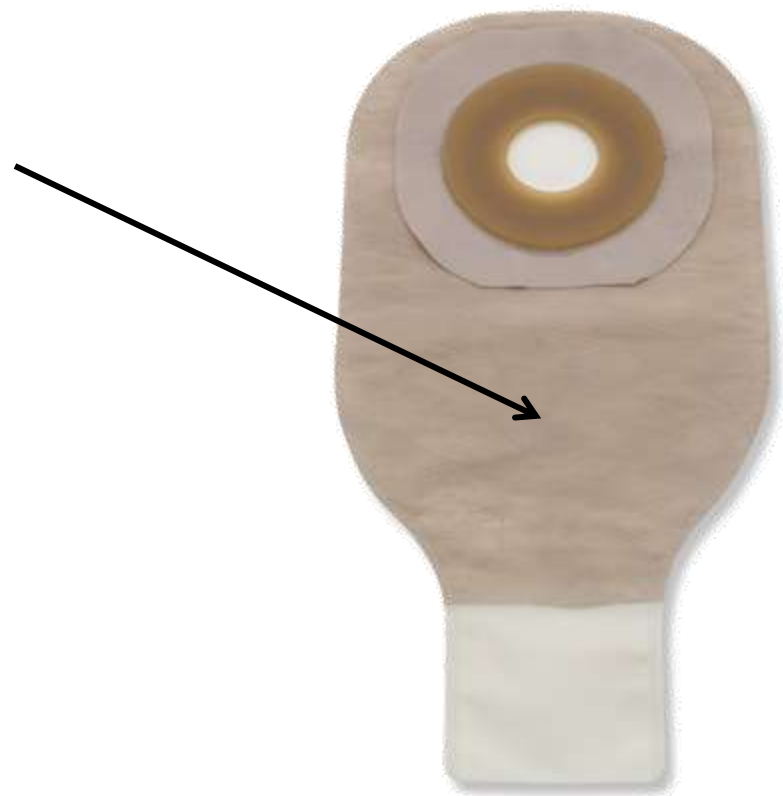


Pouching System Components:

Pouch

Pouching System Components: **Pouch**

- Contains discharge
- Contains odour



Pouching System Components: Pouch Types and Features

- Types
 - Drainable
 - Closed
 - Urostomy
 - High Output
- Features
 - One-Piece or Two-Piece
 - Filters
 - Film
 - Size



Drainable Pouch

- A pouch with an opening at the bottom
- Used for:
 - Colostomy
 - Ileostomy
- Emptying
 - When $\frac{1}{3}$ to $\frac{1}{2}$ full
 - Clean bottom before closing
 - Closure options
 - Clamp
 - Integrated



Closure Options

- Separate pouch clamp closure
 - Separate from the pouch
 - Reusable
- Integrated closure
 - Integrated into the pouch design
 - Easy to use and convenient
 - Secure
 - Comfortable
 - Low profile



Closed Pouch

- A pouch that is closed at the bottom (no spout or drain)
- Used for:
 - Colostomy
 - short term for ileostomy
- Emptying
 - When $\frac{1}{3}$ to $\frac{1}{2}$ full
 - Removed, disposed of and replaced with a new pouch



Closed Pouch

Useful for:

- Low descending or sigmoid colostomies
- People with poor dexterity, limited vision or comprehension skills
- Someone who prefers a smaller pouch for collection of their discharge for a short period of time
- Collection of mucous and containment of odor from a mucous fistula



Urostomy Pouch

- A pouch with a tap at the bottom
- Used for a:
 - Urostomy
 - Drain sites
 - Fistula with liquid output
- Emptying
 - When $\frac{1}{3}$ to $\frac{1}{2}$ full
 - May be connected to bedside collector. Need adapter.
- Other features
 - Anti-reflux feature
 - Multi-chamber construction



High Output Pouch

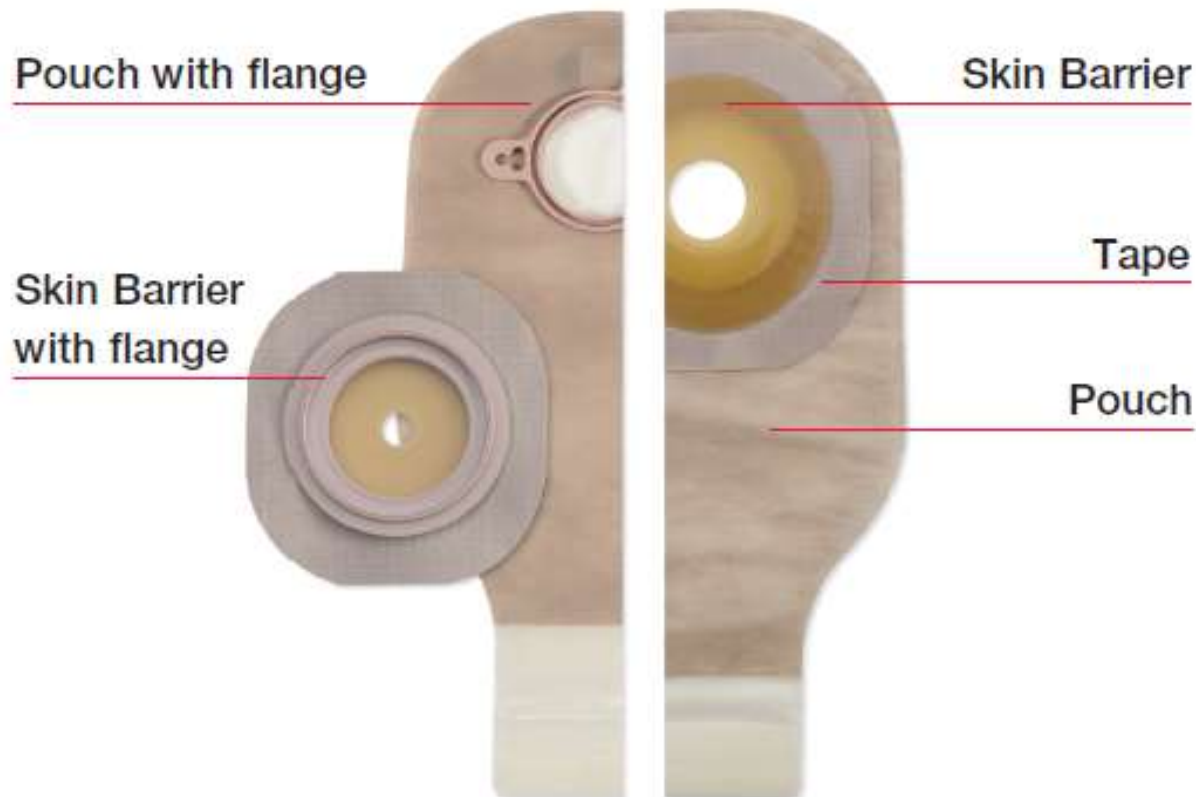
- A large capacity pouch with an integrated drain
- Used to:
 - manage high output stomas
- Emptying
 - When $\frac{1}{3}$ to $\frac{1}{2}$ full
 - May be connected to bedside collector
- Integrated drain
 - Emptying of fluids and particulate matter
 - Connection to secondary devices



Pouching System Types

Pouching System Types

Two-Piece Pouching System One-Piece Pouching System



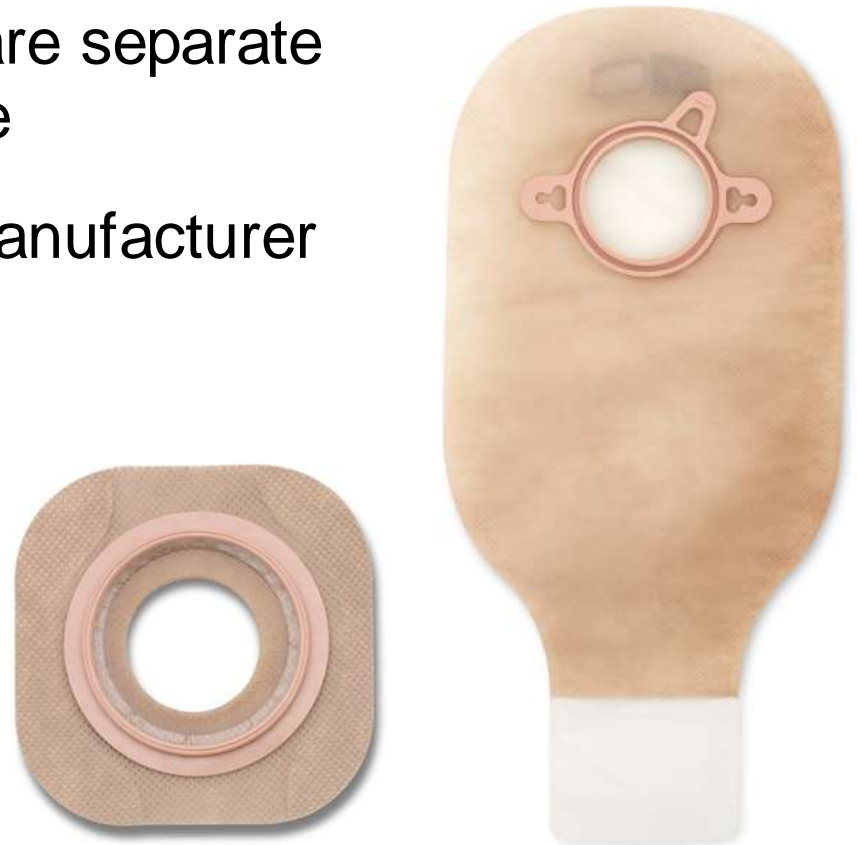
Pouching System Types: **One-Piece**

- The skin barrier and pouch are attached as one system
- Advantages:
 - More flexible and comfortable
 - Low profile
 - No assembly
 - Can be as easy as “peel and stick”



Pouching System Types: **Two-Piece**

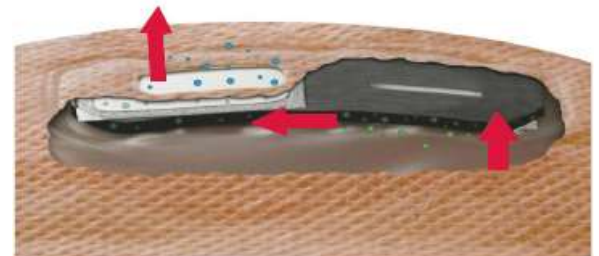
- Pouch and skin barrier are separate and attached by a flange
- Flange type, size and manufacturer must match
- Advantages:
 - Versatility
 - Convenience
 - Visibility



Pouching System Features

Pouching System Features: Filters

- Purpose:
 - Vent and deodorize gas
- Best for:
 - Colostomies
 - Ileostomies with thick discharge
 - Never for urostomies
- Found on closed and drainable pouches



Pouching System Features: **Film Options**

- Film Types

- Ultra-Clear
- Transparent
- Opaque

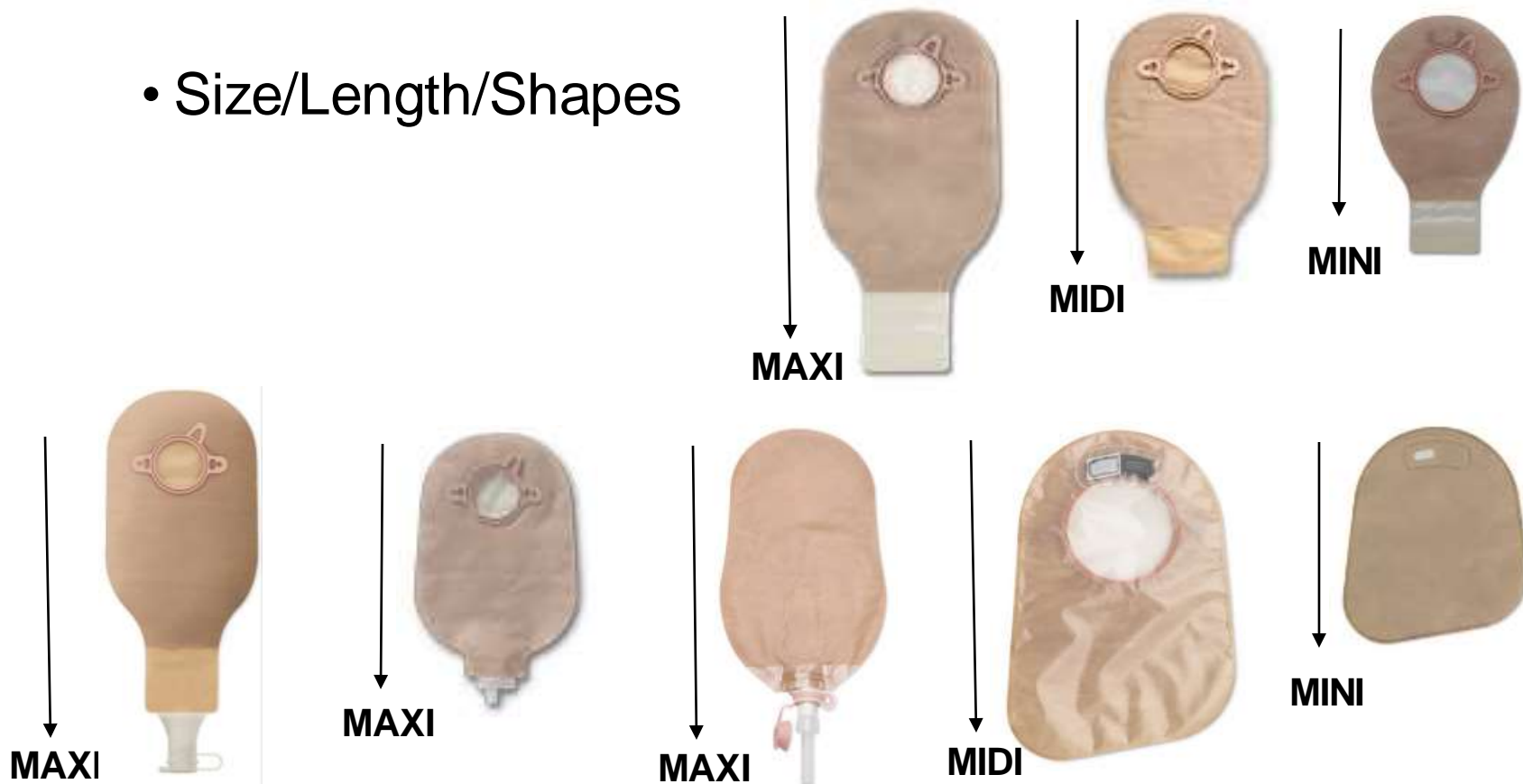
- Viewing Option

- Discretion
- Easy inspection of stoma and contents
- Assists in correct placement



Pouching System Features: **Size and Shape**

- Size/Length/Shapes



Pouching System Features: **Pouch Covers**

- Pouch Cover
 - Comfort
 - Prevent sticking to the body



Thank you



Not all products are CE marked.

The Hollister logo, CeraPlus, Shape-To-Fit and "Healthy skin, Positive outcomes," are trademarks of Hollister Incorporated.

© 2020 Hollister Incorporated.



*Remois is a technology of Alcare Co., Ltd.



Ostomy Care
Healthy skin. Positive outcomes.

Instructions for Use, Intended Use, Contraindications, Warnings, Precautions, and Instructions can be found below for products represented in this presentation.
Routine follow-up with your healthcare professional is recommended.

Adapt Barrier Rings (Flat or Convex):

Indications and Intended Use: This product is an accessory to an ostomy pouching system intended to help prevent drainage from getting under the skin barrier. Barrier rings help ostomy products conform to the skin.

Warnings: Reuse of a single use product may create potential risk to the user such as poor adhesion. Reprocessing, cleaning, disinfection, and sterilisation (sterilization) may compromise the product. This may result in odour (odor) or leakage.

Notes: The product may be cut, stretched, or stacked together to help improve fit of a pouching system. Contact a stoma care nurse or healthcare practitioner for help with the ostomy pouching system or skin irritation. In case of serious injury (incident) in relation to your use of the product, please contact your local distributor or manufacturer, and your local competent authority. For more information, see www.hollister.com/authority or contact EC Rep or local distributor.

One-Piece Closed/Drainable Pouch:

Skin should be clean and dry before applying the skin barrier.

Prior to use, be sure to read the Instructions for Use for information regarding Intended Use, Contraindications, Warnings, Precautions, and Instructions.

One-Piece Urostomy Pouch:

Indications and Intended Use: This product is intended to collect output from a stoma (e.g., urostomy) or skin opening (e.g., wound, fistula).

WARNINGS: Reuse of a single use product may create potential risk to the user such as poor adhesion. Reprocessing, cleaning, disinfection, and sterilisation (sterilization) may compromise the product. This may result in odour (odor) or leakage. Ensure proper fit as instructed. If the barrier opening is incorrect or leakage occurs, skin damage may occur (e.g., irritation, broken skin, rash, or redness). This may decrease wear time.

Notes: To help ensure proper adhesion, apply to clean, dry intact skin. Do not use oils or lotions. These products may interfere with adhesion of the skin barrier. Excess mucus from a urostomy stoma may cause the pouch to drain slower than expected. Product fit is affected by many factors such as stoma construction, stoma output, skin condition, and abdominal contours. Contact a stoma care nurse or healthcare practitioner for help with the ostomy pouching system or skin irritation. In case of serious injury (incident) in relation to your use of the product, please contact your local distributor or manufacturer, and your local competent authority. For more information, see www.hollister.com/authority or contact EC Rep or local distributor.

Two-Piece Closed/Drainable Pouch:

Skin should be clean and dry before applying the skin barrier.

WARNINGS: Reuse by reprocessing, cleaning, disinfection, and sterilisation (sterilization) may compromise the product. This may result in odour (odor) or leakage. Ensure proper fit as instructed. If the barrier opening is incorrect or leakage occurs, skin damage may occur (e.g., irritation, broken skin, rash, or redness). This may decrease wear time.

Notes: Skin barriers: To help ensure proper adhesion, apply to clean, dry intact skin. Do not use oils or lotions. These products may interfere with adhesion. Frequent removal of a Flexend skin barrier in a short period of time (e.g., multiple times a day) may result in skin damage. Product fit is affected by many factors such as stoma construction, stoma output, skin condition, and abdominal contours.

Pouches: Excess mucus from a urostomy stoma may cause the pouch to drain slower than expected.

Contact a stoma care nurse or healthcare practitioner for help with the ostomy pouching system or skin irritation. In case of serious injury (incident) in relation to your use of the product, please contact your local distributor or manufacturer, and your local competent authority. For more information, see www.hollister.com/authority or contact EC Rep or local distributor.

Instructions for Use, Intended Use, Contraindications, Warnings, Precautions, and Instructions can be found below for products represented in this presentation.
Routine follow-up with your healthcare professional is recommended.

Two-Piece Urostomy Pouch:

Indications and Intended Use: This product is intended to collect output from a stoma (e.g., urostomy) or skin opening (e.g., wound, fistula).

WARNINGS: Reuse of a single use product may create potential risk to the user such as poor adhesion. Reprocessing, cleaning, disinfection, and sterilisation (sterilization) may compromise the product. This may result in odour (odor) or leakage. Ensure proper fit as instructed. If the barrier opening is incorrect or leakage occurs, skin damage may occur (e.g., irritation, broken skin, rash, or redness). This may decrease wear time.

Notes: To help ensure proper adhesion, apply to clean, dry intact skin. Do not use oils or lotions. These products may interfere with adhesion of the skin barrier. Excess mucus from a urostomy stoma may cause the pouch to drain slower than expected. Product fit is affected by many factors such as stoma construction, stoma output, skin condition, and abdominal contours. Contact a stoma care nurse or healthcare practitioner for help with the ostomy pouching system or skin irritation. In case of serious injury (incident) in relation to your use of the product, please contact your local distributor or manufacturer, and your local competent authority. For more information, see www.hollister.com/authority or contact EC Rep or local distributor.