

The Continuum of Convex Barrier Options

Convex barrier products have been utilized to help provide a secure and predictable seal. Product selection is made by matching stoma protrusion and peristomal contours to the appropriate barriers. The outward curving of the convex skin barrier is designed to interface with the immediate peristomal skin.

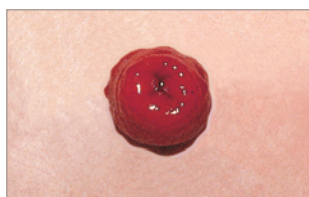
This interface depends not only on the depth, rigidity and gradient of the convex skin barrier but also on the shape and rigidity of the abdominal wall. For example, a flexible convex barrier can bend and move with the body; a firm convex skin barrier does not bend, rather it remains rigid. Appropriate barrier choice is left to the clinician's assessment of the patient and knowledge of ostomy products.

BARRIER EXAMPLE

POSSIBLE CLINICAL CASE SCENARIOS



Flat Skin Barrier



Flat Skin Barrier

- Flat peristomal plane
- Adequate stoma protrusion
- Centered stoma opening



Flat Skin Barrier
with Round or Oval
Convex Barrier Ring



Flexible Convexity

- Stoma flush with skin
- Uneven peristomal plane
- Off-centered stoma opening



Integrated Soft
Convex Barrier



Soft Convexity

- Gentle pressure required to peristomal plane
- Flush stoma
- Peristomal injury



Integrated Convex
Barrier



Firm Convexity

- Creases or folds in peristomal plane
- Off-centered stoma opening
- Stoma retracted below skin surface



Integrated Convex
Barrier with Round
or Oval Convex
Barrier Ring



Firm Convexity with More Depth

- Recessed or flush stoma
- Uneven abdominal contours
- Off-centered stoma opening

The Continuum of Convex Barrier Options

References:

- 1 Colwell JC, Goldberg MT & Carmel JE (Eds). (2015). WOCN® Society Core Curriculum Ostomy Management. Chapter 10. Philadelphia, PA: Wolters Kluwer.
- 2 Hoeflok J, Salvadalena G, Pridham S, Droste W, McNichol L, Gray M. Use of convexity in ostomy care: Results of an International Consensus Meeting. J Wound Ostomy Continence Nurs. 2017 Jan/Feb;44(1):55-62.

For product questions, sampling needs, or detailed clinical questions concerning our products in the US, call **1.888.808.7456**. In Canada call **1.800.263.7400**.

Routine follow-up with your healthcare professional is recommended.

Prior to using any ostomy products/accessories be sure to read all product inserts and labels for any indications, contraindications, hazards, warnings, cautions and directions for use.

The Hollister logo is a trademark of Hollister Incorporated.

© 2017 Hollister Incorporated. 923215-0317

Hollister Incorporated
2000 Hollister Drive
Libertyville, Illinois 60048
1.800.323.4060

www.hollister.com

Hollister Limited
95 Mary Street
Aurora, Ontario L4G 1G3
1.800.263.7400



Ostomy Care
Healthy skin. Positive outcomes.