

Where a Soft Convex Skin Barrier May Improve Fit

Case 1: Parastomal hernia with flush stoma¹

A parastomal hernia may create a bulge on the abdomen. When convexity is clinically indicated, a firm rigid convex barrier may pose the potential for pressure related skin damage.

A flexible soft convex barrier may be an appropriate solution.



Case 2: Firm abdomen with pressure injury from use of firm rigid convexity^{2,4}

Pressure ulcers may be more likely when a firm convex barrier is pressing against the skin for a prolonged period of time, especially with the addition of an ostomy belt.

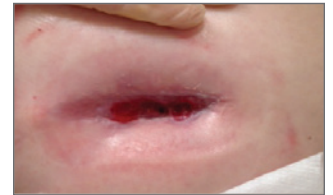
A flexible soft convex barrier may provide the correct fit while removing the cause of pressure.



Case 3: Stoma located in a crease³

A firm rigid convex barrier may not conform to the abdominal contours and “pop off” when used in a creased area.

A flexible soft convex barrier may be considered a more appropriate fit.



Case 4: Stoma located in abdominal folds^{2,3}

Abdominal folds can compromise the seal of the barrier. A convex shape can enhance the barrier fit.

A flexible soft convex barrier may match to the correct depth of the folds, conform to the abdominal contours and provide less peristomal pressure.



Case 5: Stoma height less than 20mm (2cm)³

A stoma that does not protrude above the skin may cause leakage problems under the skin barrier.

A flexible soft convex barrier may provide the right depth of convexity to help with stoma protrusion.



Case 6: Immediate post-op stoma with firm distended abdomen and off-centered lumen at risk for mucocutaneous separation^{2,5}

A mucocutaneous separation may occur as a result of poor healing, infection, or excessive tension at the mucocutaneous junction.

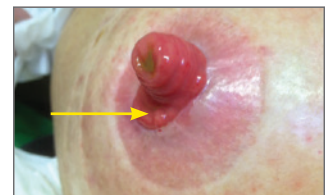
A flexible soft convex barrier may help achieve a correct fit with less pressure at the base of the stoma.



Case 7: Loop stoma³

The distal limb (arrow) of a loop stoma may discharge mucous which can undermine the barrier seal.

A flexible soft convex barrier may help provide the right fit with less pressure around the stoma to minimize undermining.



Case 8: Pyoderma gangrenosum^{2,4}

Trauma to the peristomal skin may initiate and aggravate a pyoderma gangrenosum ulcer. Efforts should be made to alleviate pressure and friction.

A flexible soft convex barrier may provide less pressure than firm convexity.



Where a Soft Convex Skin Barrier May Improve Fit

Hollister Soft Convex Barrier Options



Premier™ One-Piece Soft Convex Pouching System

Options:

- CeraPlus Skin Barrier with Remois Technology* Formulation
- Flextend Skin Barrier Formulation
- Cut-to-Fit
- Pre-Sized
- Drainable Pouch
- Urostomy Pouch



New Image™ Two-Piece Soft Convex Pouching System

Options:

- CeraPlus Skin Barrier Formulation
- Cut-to-Fit
- Pre-Sized



Adapt™ Oval and Round Convex Barrier Rings

Options:

- Flextend Barrier Infused with Ceramide
- Flextend Barrier Formulation

References:

- 1 Turnbull, G. The Ostomy Files: Parastomal Hernia *Ostomy Wound Management* Volume 49- Issue 11 – November 2003
- 2 J.C. Colwell, M.T. Goldberg, & J.E. Carmel (Eds.). (2004). *Fecal & Urinary Diversions: Management Principles*. In Chapter 12 and Chapter 14. St. Louis, MO: Elsevier Mosby
- 3 J.C. Colwell, M.T. Goldberg, & J.E. Carvel (Eds.). (2015). *WOCN® Society Core Curriculum Ostomy Management*. In Chapter 10. Philadelphia, PA: Wolters Kluwer
- 4 J.E. Carmel, J.C. Colwell, M.T. Goldberg (Eds.), *WOCN Society Core Curriculum Ostomy Management* p 181, 186. Philadelphia: Wolters Kluwer. 2016
- 5 External Stoma and Peristomal Complications following Radical Cystectomy and Ileal Conduit Diversion: A Systematic Review - Szymanski, K.M., St-Cyr, D., Alam, T., Kassouf, W. *WOCN Society Core Curriculum Ostomy Management*. p. 192. Philadelphia, PA: Wolters Kluwer. 2010

For product questions, sampling needs, or detailed clinical questions concerning our products in the US, call **1.888.808.7456**. In Canada call **1.800.263.7400**.

Routine follow-up with your healthcare professional is recommended.

CE Prior to use, be sure to read the Instructions for Use for information regarding Intended Use, Contraindications, Warnings, Precautions, and Instructions for use.
Not all products are CE marked.

The Hollister logo, Adapt, New Image, Premier and "Healthy skin. Positive outcomes." are trademarks of Hollister Incorporated. © 2020 Hollister Incorporated. 923116-0220 US-00193



**Remois is a technology of Alcare Co., Ltd.*

Hollister Incorporated
2000 Hollister Drive
Libertyville, Illinois 60048
1.800.323.4060

www.hollister.com

Hollister Limited
95 Mary Street
Aurora, Ontario L4G 1G3
1.800.263.7400