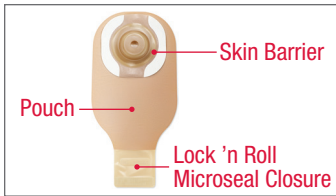


One-Piece Pouching System

Collect Supplies



Gather pouch, disposal bag, tissue and/or cloth for cleaning, and water. Optional: scissors, pen, measuring guide, accessories.

Remove Used Pouching System



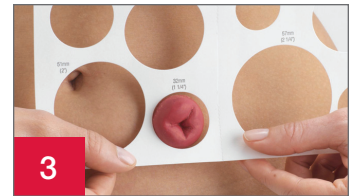
Carefully lift an edge of the adhesive and peel downward, gently pushing the skin away from the skin barrier. Properly dispose of used pouch. Do not flush down toilet.

Clean and Dry Skin



Clean the skin with water or with gentle soap as recommended by your healthcare professional. Rinse and dry thoroughly. Do not use oils, powder, lotion, or lotion-type soaps on the skin.

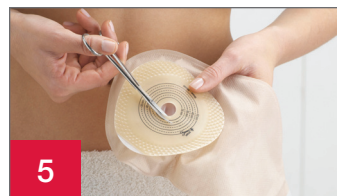
Prepare the Skin Barrier and Pouch



Measure the stoma using a stoma measuring guide before every barrier application (if using a pre-sized barrier opening, go to step 6).



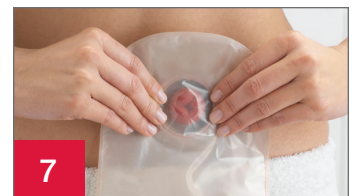
Trace the determined barrier size opening onto the skin barrier. The skin barrier should fit where the skin and stoma meet. Verify that no skin is showing between the skin barrier and the stoma to help prevent leakage and skin irritation.



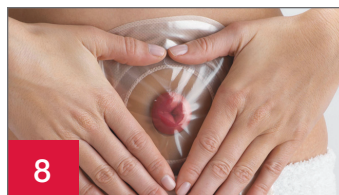
Using small curved scissors, carefully cut an opening in the skin barrier to match the pattern. Do not cut beyond the line on the release liner. Do not puncture the pouch.



Remove the release liner from the skin barrier.



Center the skin barrier opening over the stoma.



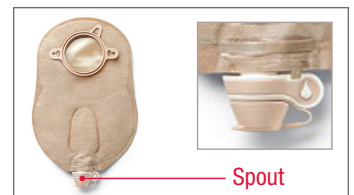
Apply gentle pressure to the skin barrier for about a minute for best adhesion.



For tape-bordered barriers, remove the backing paper on both sides and gently press adhesive against skin.



Close bottom of pouch. If using a drainable pouch, close the **Lock 'n Roll** microseal closure at the bottom of the pouch or apply a pouch clamp. Refer to the *Lock 'n Roll Microseal Closure Care Tip* for more information on how to use this closure system.



If using a urostomy pouch, make sure the drain valve is closed. The teardrop on the drain valve should face the body side of the pouch.

If desired, apply the cap provided in the box.

One-Piece Pouching System

TIPS	LIST OF PRODUCTS	STOCK NO
<ul style="list-style-type: none">• If using a barrier ring or paste, apply it to the sticky side of the skin barrier next to the stoma opening as directed• The skin around your stoma should not show any signs of rash or sores• Irritated skin should be evaluated by a healthcare professional• Your stoma will probably be swollen after surgery. It may take several weeks or months for the stoma to shrink to its permanent size• The stoma may bleed slightly when you clean it• The use of skin protective wipes are not recommended under extended wear skin barriers as they may decrease wear time	One-Piece Pouching System	_____
	Accessories	
	Barrier rings	_____
	Ostomy belt	_____
	Paste	_____
	Lubricating deodorant	_____
	Stoma powder	_____
Other _____	_____	

Additional Instructions

For product questions, sampling needs, or detailed clinical questions concerning our products in the US, call **1.888.808.7456**. In Canada call **1.800.263.7400**.

Routine follow-up with your healthcare professional is recommended.

Prior to using any ostomy products/accessories be sure to read all product inserts and labels for any indications, contraindications, hazards, warnings, cautions and directions for use.

The Hollister logo, Lock 'n Roll and "Healthy skin. Positive outcomes." are trademarks of Hollister Incorporated.
© 2017 Hollister Incorporated. 923069-1017 US-00123

Hollister Incorporated
2000 Hollister Drive
Libertyville, Illinois 60048
1.800.323.4060

www.hollister.com

Hollister Limited
95 Mary Street
Aurora, Ontario L4G 1G3
1.800.263.7400

